

Supports Coordination



Who We Are:

- ▶ Private, Non-profit Agency
- ▶ Base Service Unit
- ▶ In business for over 60 years
- ▶ Providing Supports Coordination for over 35 years
- ▶ Almost 400 staff
- ▶ Serve over 12,000 individuals per year
- ▶ Provide services from birth through geriatrics



What is a “Base Service Unit?”

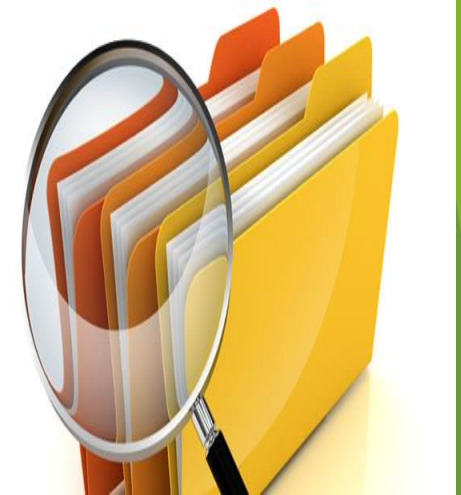
- ▶ Lenape Valley Foundation contracts with Bucks County for specific services - Outpatient, Partial Hospital, BHRS, etc.
- ▶ For individuals with no insurance and no financial resources we are the safety net.
- ▶ Lenape Valley Foundation is accountable to the Bucks, Montgomery, Chester, Berks, Schuylkill, and Delaware County Offices of MH/DP for these contracted services.

Supports Coordination

- Almost 1300 Consumers, in Bucks, Montco, Chester, Berks, Schuylkill, and Delaware Counties
- 32 SCs
- 6 Supervisors

SCs':

- Locate Services
- Coordinate Services
- Monitor Services



The Supports Coordinator (SC) works with the individual and their family to write a plan of support describing that person's wants and needs in all areas of their lives including:

- Health and Safety
- Important to:
- Important for:

Service Eligibility

- In PA, must be diagnosed before age 22, either with ID or Autism, regardless of IQ score
- IQ refers to intellectual or cognitive ability
 - Gifted -130+
 - Above Average - 115-129
 - Average - 85-114

ID Diagnosis Starts Here:

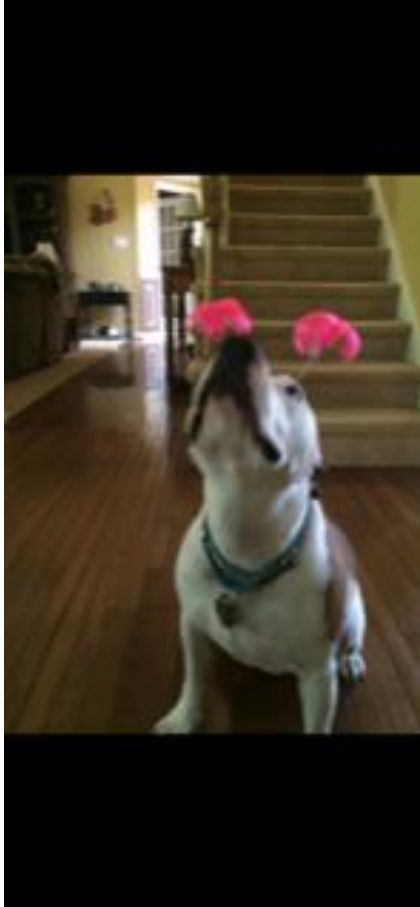
- Borderline - 70 (PA requirement is 70 or below)
- Mild -55-69
- Moderate - 40-54
- Severe - 25-39
- Profound - below 25

Eligibility

- Determined by the County MH/DP office

600 Louis Dr, Warminster, PA 18974

- 215-444-2847 – ask for Intake for ID Services
- Pick a Supports Coordination Organization (SCO) for a list of available agencies.
- SCO is notified and family is called to set up initial meeting and begin writing the ISP (Individual Support Plan)



I have an
SC....what
can they
do???

The truth is, we can do a lot.

- ▶ We are the main point of contact for any service need throughout the scope of your loved one's life.
- ▶ We can connect with paid supports, unpaid supports, natural resources.
- ▶ We are here to help you.
- ▶ Transition time is very important to have us involved.

Transition

- ▶ Transition planning needs to begin earlier than ever – age 14-16
- ▶ Families should prepare for the reality of post-graduation life
- ▶ Collaboration with the school system essential
- ▶ SCs play role in individuals/families getting most out of IEP process
- ▶ Invite SCs' to IEP's



Transition



Includes:

- ▶ Instruction
- ▶ Related services – job coaching, job exploration
- ▶ Community experiences
- ▶ Employment & post-secondary education objectives

Beginning at age 16 (or earlier); IEP must include:

- ▶ Measureable post-secondary goals related to employment
- ▶ Transition services to assist the child in reaching those goals¹

For IEP meetings

- ▶ SCs' need a seat at the table
- ▶ Individual/families should request SC participation
- ▶ Don't discount technology as a way to increase independence

Job Readiness Skills

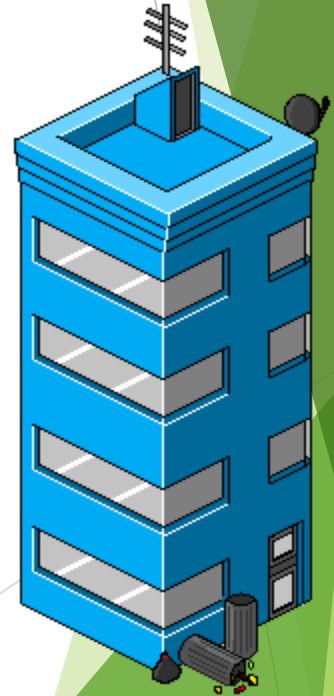
- Essential skills for success in work environment
- ISP process help develop ISP outcomes related to soft skills
- Soft Skills include:
 - ▶ Communication skills
 - ▶ Enthusiasm & attitude
 - ▶ Teamwork
 - ▶ Networking
 - ▶ Problem solving & Critical Thinking
 - ▶ Professionalism
 - ▶ Decision making



Independent Living Skills

Independent living skills are also essential for post-graduation employment

- Self-management (unsupervised time)
- Safety skills
- Stranger awareness
- Money/debit/credit cards
- Use of public transportation, including Uber
- NOVA and PA Family Network can be great resources for this.



How can I prepare for post grad

- Explore all career areas
- Complete as many work opportunities as possible
- Volunteer (this is a great resume builder)
- Mentoring/internships
- Start as early as possible
- Receive benefits counseling
- Work on independence (use of technology can really assist with this, especially smart phones)
- Work on ability to self advocate, and also the soft skills we all need in a workplace, such as professionalism, communication, eye contact, talking to a boss.
- Be positive about your success – get rid of the “I can’t” attitude
- Attend as many community events as possible. Knowledge is power, and don’t be afraid to ask questions. If you are connected with an SC, do not hesitate to communicate needs.



What if employment is not the path for my loved one?

- ▶ There are many other options, including Community Participation Support, Volunteering, and a Self-Directed Day program.
- ▶ This allows for great experiences, in an environment that may feel more closely aligned with your loved ones needs.

Waiver
information

▶ please!

Funding streams

Medicaid Waiver Funding

- Consolidated, Community Living, and P/FDS Waiver through ODP.
- CHC waivers through the Office of Long-Term Living.
- Adult Autism Waiver through the Bureau of Autism Services.

BASE or “County Funding”

- Small \$ amounts from the County for people who need services and no waiver funding is available, and people that don't qualify for waivers but have needs.

TSM or SC Only

- Individual only has Supports Coordination
- Usually under 21 years old
- Meet biannually to plan for future needs, and also connect to entitlement services through the educational system and insurance.

FUNDING - CONSOLIDATED WAIVER

Eligibility

- Must be age 3 or older
- Have a diagnosis of an intellectual disability, determined via a Full Scale IQ(FSIQ), an Adaptive Behavioral Scale (ABAS) and signed off by a licensed psychologist, or have a diagnosis of Autism
- Intermediate Care Facility (ICF) level of care based on a medical evaluation by a physician (for ID), or ICF/ORC (Other Related Conditions) level of care
- Eligible for Medical Assistance
- \$2,000 resource limit if receiving SSI, \$8,000 resource limit if receiving SSD
- Monthly income limit is 300% of the Federal Benefit Rate (for 2020, this is \$2,313 for a single individual)
- This is known as the “big waiver” There is no cap.

Services Available:

- Assistive Technology (lifetime limit of \$10,000 and Durable Medical Equipment is excluded)
- Behavioral Support (21 and over)
- Companion Care Services (18 and over)
- Educational Support (must have an employment outcome or other outcome related to skill attainment or development)
- In Home and Community Supports
- Home Accessibility Adaptations (\$20,000 over a 10 year period)
- Homemaker/Chore Services
- Community Participation Supports (formerly known as an adult day program or prevocational services)
- Nursing
- Licensed and Unlicensed Residential Habilitation (Community Living Arrangements, Lifesharing, and Supported Living)
- Respite (this can include overnight respite up to 30 overnights per year, less than 24 hour respite up to 120 hours per year, and respite at licensed and accredited camps as determined by the ACA)
- Specialized supplies (diapers, incontinence pads that are not covered by insurance)
- Supported Employment and Advanced Supported Employment
- Benefits Counseling
- Small Group Employment
- Supports Broker
- Supports Coordination
- Therapies (physical, occupational, speech and language, visual/mobility, equine, art and music therapy)

P/FDS – Person/Family Direct Supports

\$33,000 Cap

What does that provide:

Same Services as Consolidated Waiver as long as the total \$ remains under the Cap:

- Community Participation Supports 5 days per week
- Transportation to and from day program
- In home and community supports/companion/respite
- Supported Employment is NOT part of the P/FDS

cap, up to \$15,000.

- ▶ Supports Broker service is NOT part of the cap.

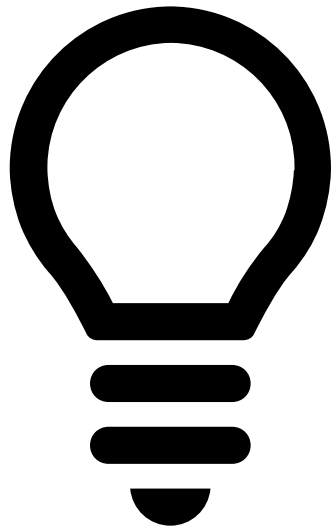


Community Living Waiver

This is a new waiver, that went into effect 1/1/2018. This has an annual cap of \$70,000.

What does that provide:

Same Services as Consolidated Waiver (with the exception of a CLA), as long as the total \$ remains under the Cap.



These sound
great! How
do I get one
of these?

Prioritization of Needs for Services.

- This is considered the “wait list” for ODP waiver services.
- This is not in numbered order but based on need.
- There are three categories – Emergency, Critical, and Planning.
- This is another reason why it is imperative to share information with your SC, so that they can ensure your loved one is appropriately placed on PUNS. This is a direct communication with the SCO and the county/state.
- Without an SC, these services and funding cannot be accessed or obtained. The SC’s are the gatekeeper. The needs outweigh capacity and it is imperative to not solely rely on system funding. It is important to have natural resources too.

How Many People are Waiting?

www.pawaitinglistcampaign.org³

As of December 31st, 2019

***TOTAL PEOPLE WAITING* = 12,700 (Bucks – 484)**

- **Emergency Needs Category = 5,269 (135)**
- **Critical Needs Category = 4,617 (138)**
- **Planning Needs Category = 2,814 (211)**

ADULT AUTISM WAIVER

Eligibility Criteria:

- Be age 21 or older
- Have a diagnosis of autism spectrum disorder (ASD)
- Meet Functional Eligibility
- Must have substantial functional limitations in 3 or more of the major life activities: self-care; understanding and use of receptive and expressive language; learning; mobility; self-direction; capacity for independent living
- Meet Level of Care (LOC) guideline
- Meet the income and resource limits for Medical Assistance
- Financial eligibility is based on 300% of the Federal Benefit Rate
- Currently 3,252 people on this waiting list.

Available Services:

- Behavior Specialist Services
- Community Inclusion (assists with teaching ADL's)
- Community Transition Services (one-time financial assistance for an individual moving from an institution into the community, such as a security deposit or moving costs)
- Day Habilitation
- Environmental Modifications
- Family Counseling (limited to 20 hours per year)
- Family Training
- Job Assessment
- Job Finding
- Nutritional Consultation
- Residential Habilitation (limited to Community Living Arrangements and Lifesharing)
- Respite (limited to a cost of \$6,000 per year)
- Supported Employment
- Supports Coordination
- Temporary Crisis Services (temporary increase of staff, and limited to 540 hours per year)
- Therapies (occupational and speech and language)
- Small Group Employment

OFFICE OF LONG TERM LIVING WAIVER

- ▶ Be 21-60 (individuals that are enrolled in this waiver prior to turning 60 then remain enrolled)
- ▶ Individuals who are physically disabled as the primary diagnosis
- ▶ Substantial functional limitations in three or more of the following major life activities: Self-care, understanding and use of language, learning, mobility, self-direction and/or capacity for independent living.
- ▶ Meet the financial requirements as determined by your local County Assistance Office.

Available Services

- Adult Daily Living Services (options are limited)
- Accessibility Adaptations, Equipment, Technology and Medical Supplies
- Community Integration
- Community Transition Services
- Financial Management Services
- Home Health Aides
- Non-Medical Transportation
- Personal Assistance Services (assistance with ADL's)
- Personal Emergency Response System (PERS)
- Respite
- Service Coordination
- Supported Employment
- Therapeutic and Counseling Services

What Can I Do?

- ▶ Independence must be fostered at every step
- ▶ Individuals should not be dependent upon their families to navigate the world for them
- ▶ Please keep in contact with your SC and make sure they are at every meeting
- ▶ Look at technology and natural supports too



References

- ▶ ¹ED.gov
- ▶ ² National Collaborative on Workforce and Disability. *Fostering Inclusive Volunteering and Service Learning*
- ▶ ³PA Waiting List Campaign



Phone #'s & Websites

- ▶ Bureau of Autism Services

- ▶ PAutism.org

- ▶ 877-231-4244

- ▶ Bucks County MH/DP

- ▶ 215-444-2800

Office of Long Term Living

- ▶ 1-877-550-4227

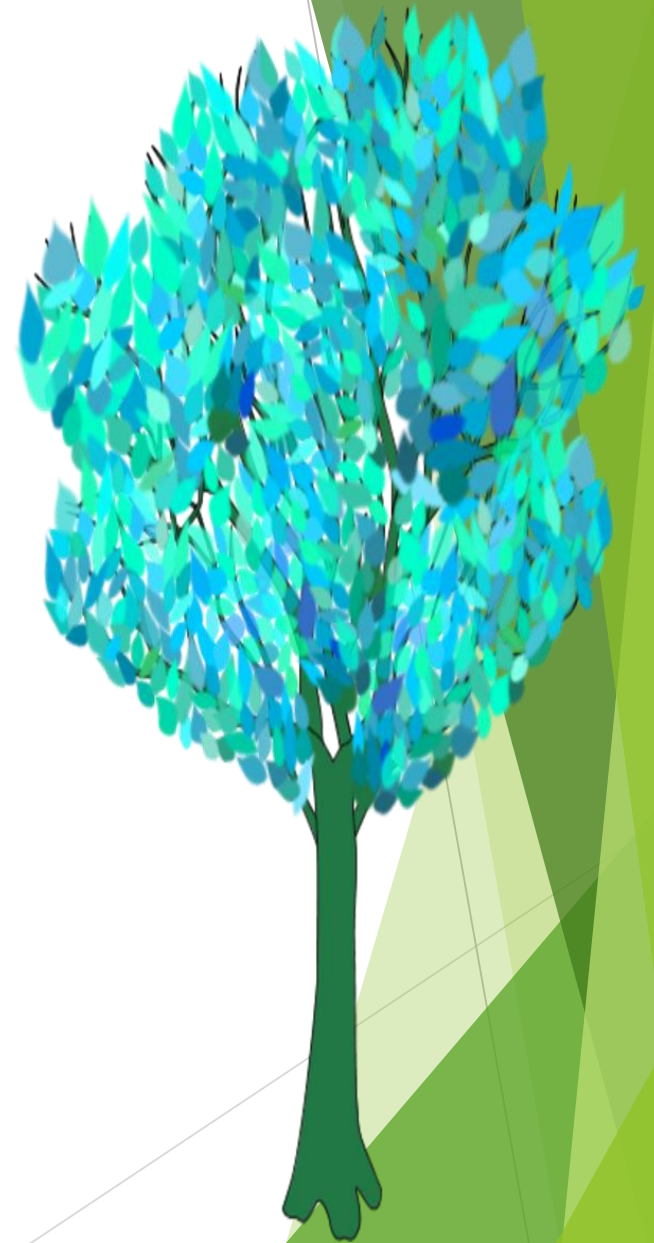


QUESTIONS

CONTACT US:

Main # - 215-345-5300

- ▶ **Cindy Seemiller**
 - ▶ **Cindy.Seemiller@lenapevf.org**
 - ▶ **267-893-5228**





▶ Thank
▶ You!!!!